

JOYS-2 SERIES

Fingertip Single-Axis Joystick

The new JOYS-2 through its innovative design and electronic features the most complete solution for any joystick application. Double hall effect sensor technology make it able to maintain a perfect proportional output repetitiveness throughout millions of cycles. Ergonomic design and great spring return force keep the finger always connected to the real movement. Its case has been projected to protect the internal rotation mechanism from the thinnest dust and every kind of liquid, also electronic is completely molded in resin to achieve the IP67 protection grade. Ares digital electronic allows our finger joystick to be replaceable with every other competitors. Both of the proportional outputs can be set as customer pleasure from 0.5 to 4.5 V, radiometric from 10% to 90% or radiometric from 25% to 75%. The internal voltage regulator extend the range of supply voltage at 5 to 24 Vdc simplifying your electric circuit.



Characteristics Electrical

Ergonomic design for secure grip on the lever

Long lifetime output constancy thanks to the contactless double hall effect sensor technology

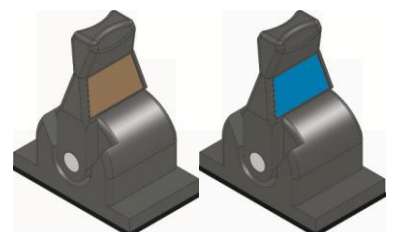
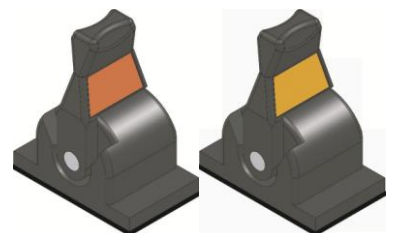
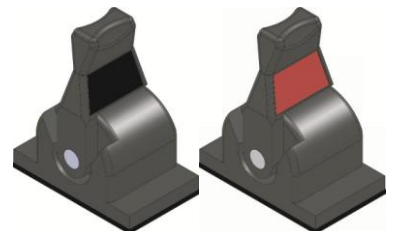
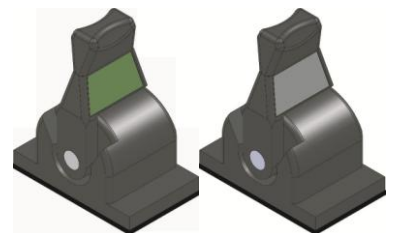
Developed for extreme environmental condition with complete IP67 also for internal mechanical parts

Available with colored soft-touch cap for premium style and feelings

Wide and recognizable space for movement symbol

Easy to mount on panels without rear accessibility through two different fixing patterns with M3 or M4 external screw

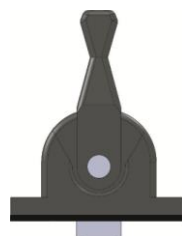
Digital redundant electronic and output with high configuration capability
Compatible with Danfoss PWG distributors



LATERAL REST



POSITION FRICTIONED



CENTRAL REST POSITION



JOYS-2 SERIES

Fingertip Single-Axis Joystick

Specifications

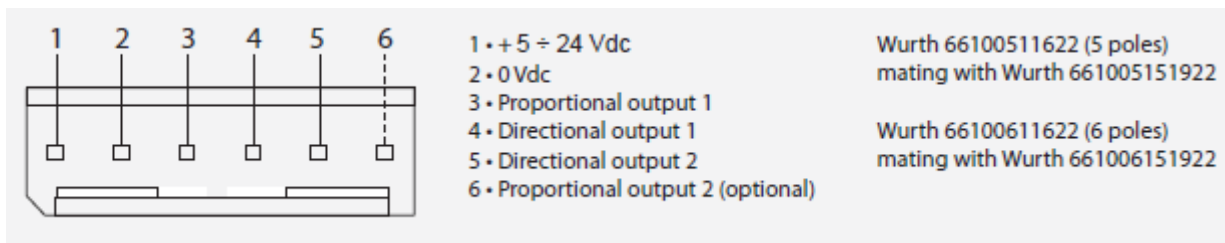
MECHANICAL

ACTUATION.....Single-axis
LEVER DEFLECTION ANGLE..... $\pm 30^\circ$ central rest position, 60° lateral rest position
ACTUATION TYPE..... Central rest position, lateral rest position, frictioned
ACTUATION FORCE..... $\pm 5\text{N}$
SERVICE LIFE..... ≥ 5 million cycles
WORKING TEMPERATURE..... $-40^\circ\text{C} \div 85^\circ\text{C}$
PROTECTION CLASS..... IP 67 mechanical and electronic above panel

ELECTRICAL

SUPPLY VOLTAGE..... $5 \div 24\text{ Vdc}$
CURRENT CONSUMPTION..... $< 30\text{mA}$
OUTPUT SIGNAL..... $0.5 \div 4.5\text{ Vdc}$, 10% to 90% of the Supply voltage or 25% to 75% of the Supply voltage
LOAD IMPEDENCE ON U..... 0.5Ω
MAX. CURRENT ON U , U..... 0.1A
CENTER REFERENCE..... $2.5\text{V} \pm 2\%$, 48% to 52% of supply voltage

CONNECTIONS



DIMENSIONS

