

# DIN-100LD

# Electronic regulator for Proportional Valves single Solenoid

The command REP-010 is born for controlling proportional valves with one solenoid open loop (valves that do not have internal positioning of the transducer). The regulator and 'integrated directly into the cable with a box 75x40h20mm that facilitates the installation and application.

### SPECIFICATIONS:

## ELECTRICAL

```
POWER:.....da 8V @ 30V
BURDEN:.....18mA @ 12V
OUTPUT VOLTAGE POTENTIOMETER:.....+ 5V
MAX. POWER OUTPUT POTENTIOMETER:.....1W
RECOMMENDED VALUES POTENTIOMETER:.....4K7/10K
REFERENCE INPUT:...F00234-0000-000.....0 – 4,5 V
                        F00234-0000-PWM.....PWM
                        F00234-0000-10V.....0 – 10V
F00168-0P0N-000..... Pulse with Step by 10mA@50mA
AREA DOES NOT WORK:....F00234-0000-000.....0V
                        F00234-0101-000.....2,5V
```

CURRENT ADJUSTMENT  
 PROPORTIONAL SOLENOID:.....da 0.05A @ 2,5 A  
 CURRENT ADJUSTMENT Imin., Imax:.....0 – 50%  
 SETTING TIME OF RAMP:.....0 – 10Sec  
 PWM:.....30Hz- 330Hz  
 RESOLUTION PWM:.....9 Bit  
 TOLERANCE :.....+/-2%  
 TEMPERATURE RANGE:.....-15°C ÷ +70°C  
 INTERNAL TERMINATION:.....con 1 mt di cavo o Din 43650  
 OUTPUT PROTECTED AGAINST SHORT CIRCUIT

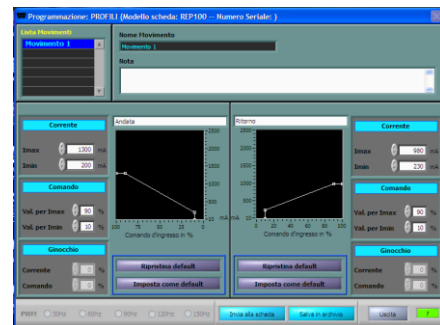


## MECHANICAL

CONTAINER ..... GreylandDR55  
CONTACT RESISTANCE: ..... <4mohm  
TIE: .....  
CABLE DIAMETER: ..... 5X0 .., 50  
PROTEZINE DEGREE: IP65 .....  
INSULATION CLASS: ..... VDE0110  
COLOR BOX: ..... Black

**CONNESSIONE CAVO :**

- WHITE: + POWER 10@30vDC
- BROWN: - MASS
- GREEN: POSITIVE POTENTIOMETER 5VDC
- YELLOW: SIGNAL potentiometer (CENTRAL)
- GRAY: MASS POTENTIOMETER GND



PROGRAMMING PARAMETERS Imin., Imax., Ramps,  
Reference d 'input, PWM working,  
Adjusting the sensitivity of the input signal

## PRODUCT COMPLIANCE WITH EUROPEAN DIRECTIVE RHOS 2002/95/CE

## DIN-100LD

# Electronic regulator for Proportional Valves single Solenoid

**Item Code: D000-000 F00239-100 LD Din Standard with conn. Deutsch**  
**F00239-000-D00P Din Din Male socket with 100 LD**  
**F00239-D00P-10V Din Din Male socket with 100 LD 0-10 V**  
**F00239-D101-000 Din 100 In LD with 2.5 V PWM out 0**  
**DP0N F00239-000-Din 100 LD with pulse input with Step 10mA to 50Ma**

### OPERATION

The controller REP-010 is integrated into a cable with a box 75x40x20mm which allows for rapid connection, thanks to the complete resin can guarantee a high reliability even in the most extreme conditions.

The system works on the principle of pulse width modulation said PWM and is operated in the back current to obtain an output current to the solenoid proportional to the input signal.

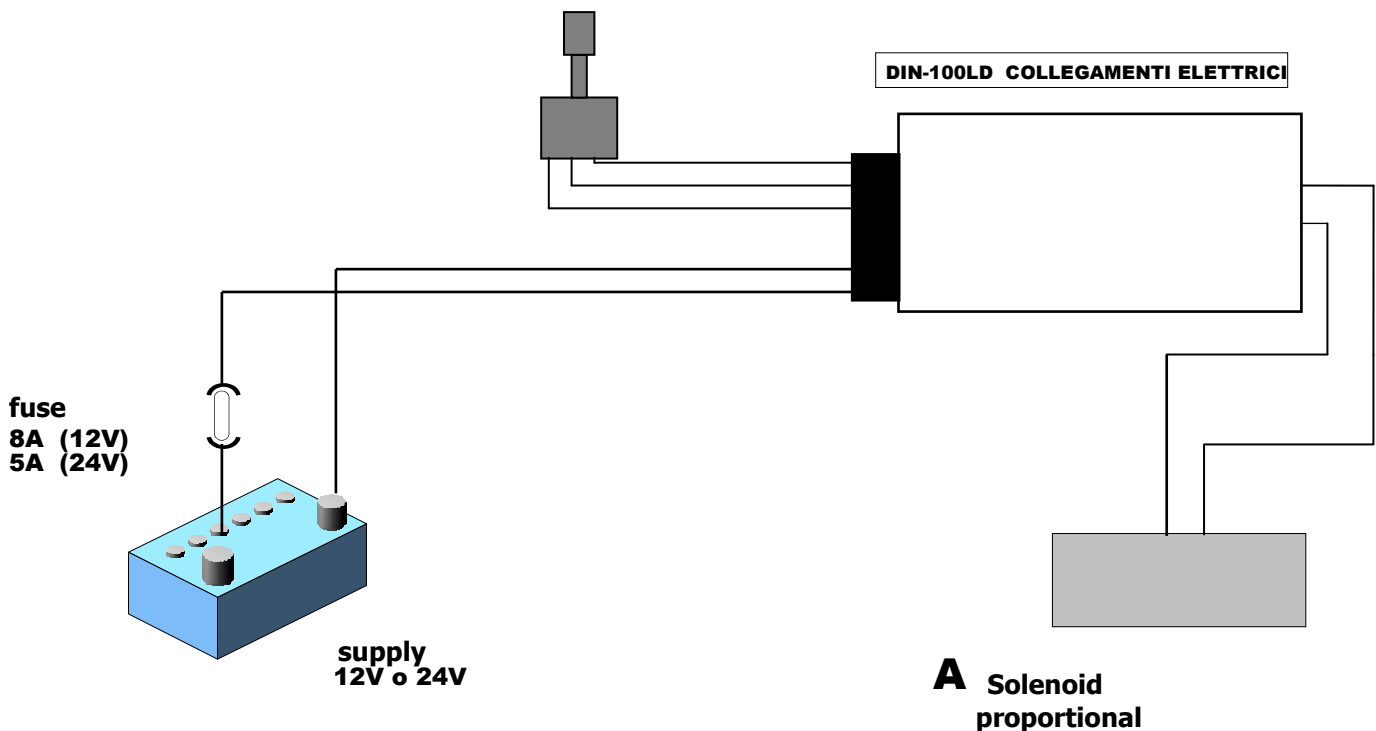
They were provided protections against output short-circuit, current limiting in case of over temperature protection and reverse polarity protection.

In the model-F00239-000 DP0N the entrance instead of the potentiometer is operated by a switch giving a series of pulses towards the positive 5V to increase and to decrease towards ground.

### SETTING

The din-100 can be adjusted to suit your needs via PC through a related software on windows platform. And 'possible to supply the DIN-100LD already pre-calibrated to customer specifications.

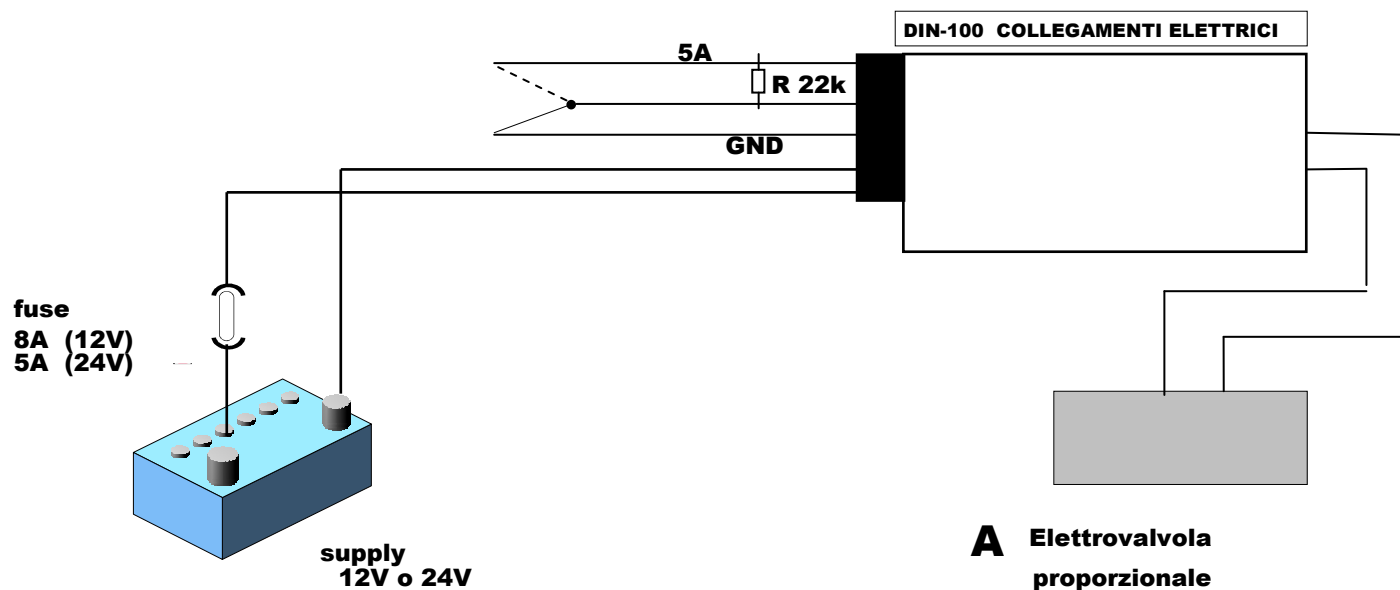
### INSTALLATION F00239-0000-000 Din 100 LD Standard



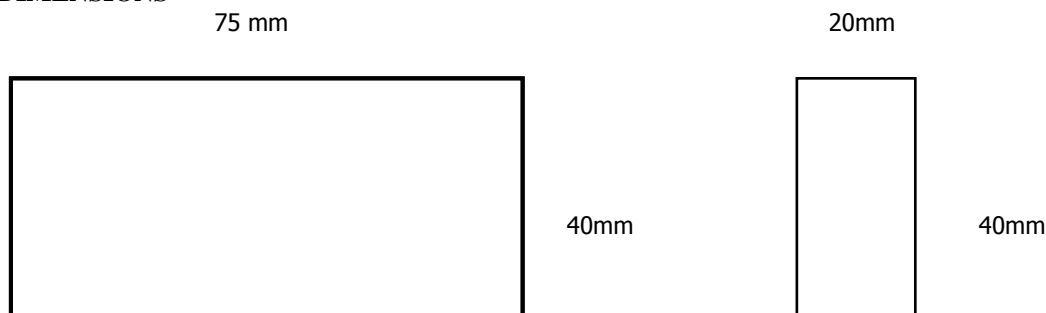
**DIN-100LD**

## Electronic regulator for Proportional Valves single Solenoid

**INSTALLATION F00239-0P0N DIN100-000 LD with pulse input with Step 10mA to 50mA**



### DIMENSIONS



The company assumes no responsibility for any errors that may appear in this document and reserves the right to change the descriptions and data without prior notice.